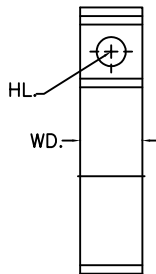
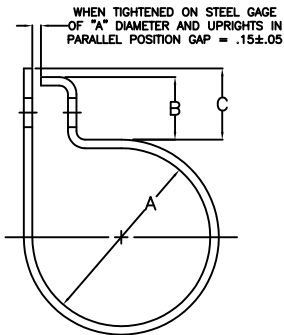


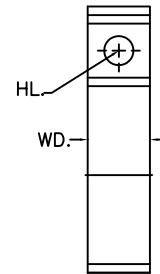
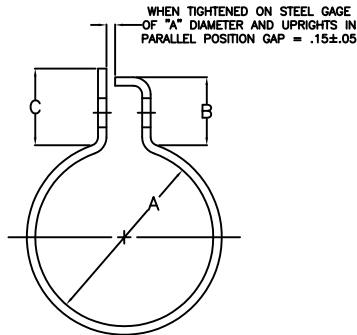
# CLAMP SPECIFICATIONS

NOTE: ON ALL STYLES CUSTOM SIZES AND FINISHES AVAILABLE UPON REQUEST. ALSO, ALL CLAMPS ARE SHOWN IN THE CLOSED POSITION

## STYLE #1100

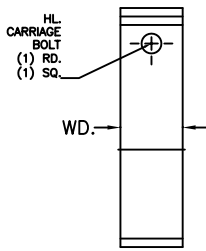
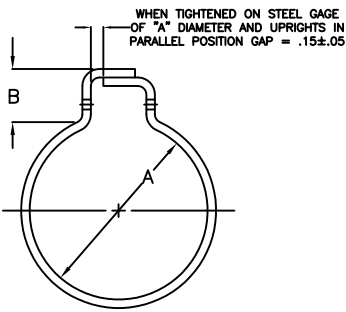


## STYLE #1800

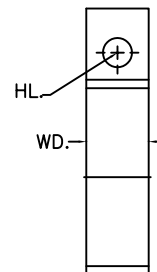
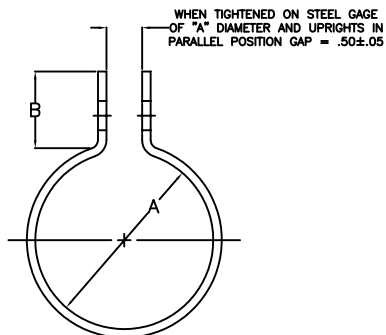


SERIES	A	B	C	HL.	WD.	NUT & BOLT	MAT'L	SERIES	A	B	C	HL.	WD.	NUT & BOLT	MAT'L	GAP
1101	3/4" & UP	1.0	1.12	0.34	0.88	-	0.120	1801	3/4" & UP	1.00	1.12	0.34	0.88	-	0.120	STANDARD
1102	3/4" & UP	1.0	1.12	0.41	0.88	-	0.120	1802	3/4" & UP	1.00	1.12	0.41	0.88	-	0.120	STANDARD
1122	3/4" & UP	1.0	1.12	0.34	0.88	5/16"	0.120	1804	2-1/2" & UP	1.00	1.25	0.41	1.00	-	0.250	0.31
1123	3/4" & UP	1.0	1.12	0.41	0.88	3/8"	0.120	1806	2-1/2" & UP	1.25	1.25	0.53	1.12	-	0.250	0.31
1124	2-1/2" & UP	1.0	1.12	0.41	1.00	3/8"	0.156	1822	3/4" & UP	1.00	1.12	0.34	0.88	5/16"	0.120	STANDARD
1125	2-1/2" & UP	1.0	1.12	0.41	1.00	3/8"	0.250	1823	3/4" & UP	1.00	1.12	0.41	0.88	3/8"	0.120	0.31
								1824	2-1/2" & UP	1.25	1.25	0.41	1.00	3/8"	0.250	0.31

## STYLE #1900



## STYLE #2000



SERIES	A	B	HL.	WD.	NUT & BOLT	MAT'L	SERIES	A	B	HL.	WD.	NUT & BOLT	MAT'L
1902	3/4" & UP	1.12	0.34	0.88	5/16"	0.120	2002	3/4" & UP	1.00	0.41	0.88	-	0.120
1903	3/4" & UP	1.12	0.41	0.88	3/8"	0.120	2004	2-1/2" & UP	1.00	0.41	1.00	-	0.250
1904	2-1/2" & UP	1.12	0.34	0.75	5/16"	0.156	2006	2-1/2" & UP	1.00	0.41	1.00	-	0.156
1905	2-1/2" & UP	1.12	0.41	1.00	3/8"	0.156							

MPC P/N: FE Series

DWG BY: vkurek

DATE: 01.26.09



1201 S. Mercury Drive  
Schaumburg, IL 60193  
847-524-4400 www.mercprod.com  
info@mercprod.com

REV.	01.26.09	INITIAL RELEASE
	DATE	CHANGE